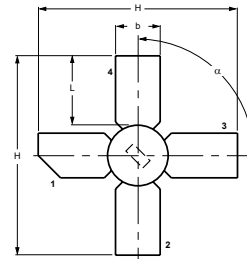
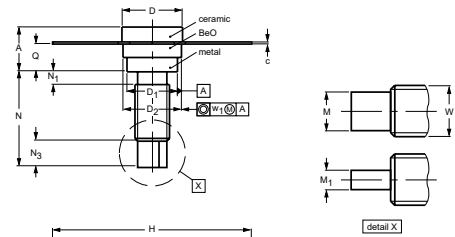


## DESCRIPTION

Designed for use in linear u.h.f. amplifiers of TV transposers and transmitters in band IV-V, as well as for driver stages in tube systems.

## FEATURES

- Specified 25V, 860MHz Characteristics
- $P_o = 4.4W$  @25V, 860MHz
- $G_P = 7.0$  dB (Typ) @25V, 860MHz
- Omnigold™ Metalization System



1. Collector
2. EMITTER
3. BASE
4. EMITTER

## DIMENSIONS

NOTE: ALL ELECTRODES ARE ISOLATED FROM FLANGE.

UNIT	A	b	c	D	D <sub>1</sub>	D <sub>2</sub>	H	L	M <sub>1</sub>	M	N	N <sub>1</sub> max.	N <sub>3</sub>	Q	W	w <sub>1</sub>	$\alpha$
mm	5.97 4.74	5.85 5.58	0.18 0.14	7.50 7.23	6.48 6.22	7.24 6.93	27.56 25.78	9.91 9.14	3.18 2.66	1.66 1.39	11.82 11.04	1.02	3.86 2.92	3.38 2.74	8-32 UNC	0.381	90°

## MAXIMUM RATINGS

CHARACTERISTICS	SYMBOL	RATINGS	UNITS
Collector-Emitter Voltage	$V_{CEO}$	27	V
Collector-Base Voltage	$V_{CBO}$	50	V
Collector-Emitter Voltage	$V_{CES}$	50	V
Collector Current	$I_C$	2.0	A
Emitter-Base Voltage	$V_{EBO}$	3.5	V
Collector Power Dissipation	$P_{DISS}$	21.5	W
Storage Temperature Range	$T_{STG}$	-65 to 150	°C

## ELECTRICAL CHARACTERISTICS

CHARACTERISTICS	SYMBOL	TEST CONDITIONS	MIN.	TYP.	MAX.	UNITS
Collector-Emitter Breakdown Voltage	$V_{(BR)CEO}$	$I_C=25mA, I_B=0$	27	-	-	V
Collector-Base Breakdown Voltage	$V_{(BR)CBO}$	$I_C=10mA, I_E=0$	50	-	-	V
Collector-Emitter Breakdown Voltage	$V_{(BR)CES}$	$I_C=10mA, V_{BE}=0$	50	-	-	V
Emitter-Base Breakdown Voltage	$V_{(BR)EBO}$	$I_E=5mA, I_C=0$	3.5	-	-	V
Collector Cutoff Current	$I_{CBO}$	$V_{CB} = 28V, I_E = 0$	-	-	1.0	mA
DC Current Gain	$h_{FE}$	$V_{CE}=25V, I_C=850mA$	15	40	-	
Collector-emitter saturation voltage	$V_{CESat}$	$I_C=500mA, I_B=100mA$	-	0.25	-	V
Power Gain	$G_P$	$V_{CC}=25V, P_{OUT}=4.4W, f=860MHz$	-	7.0	-	dB
Collector Output Capacitance	$C_{Ob}$	$V_{CB}=25V, I_E=0, f=1MHz$	-	26	-	pF

Note : Above parameters , ratings , limits and conditions are subject to change.